



## Urinalysis Reagent Strips (Urine)

For rapid detection of multiple analytes in human urine.  
For *in vitro* diagnostic use only.

### INTENDED USE

The Urinalysis Reagent Strips (Urine) are firm plastic strips onto which several separate reagent areas are affixed. The test is for the detection of one or more of the following analytes in urine: Ascorbic acid, Glucose, Ketone (Acetoacetic acid), Bilirubin, Blood, Specific Gravity, Protein, Urobilinogen, Nitrite, and pH.

### SUMMARY

Urine undergoes many changes during states of disease or body dysfunction before blood composition is altered to a significant extent. Urinalysis is a useful procedure as an indicator of health or disease, and as such, is a part of routine health screening. The Urinalysis Reagent Strips (Urine) can be used in general evaluation of health, and aids in the diagnosis and monitoring of metabolic or systemic diseases that affect kidney function, endocrine disorders and diseases or disorders of the urinary tract.<sup>1,2</sup>

### PRINCIPLE AND EXPECTED VALUES

**Ascorbic acid:** This test involves decolorization of Tillmann's reagent. The presence of ascorbic acid causes the color of the test field to change from blue-green to orange.

**Glucose:** This test is based on the enzymatic reaction that occurs between glucose oxidase, peroxidase and chromogen. Glucose is first oxidized to produce gluconic acid and hydrogen peroxide in the presence of glucose oxidase. The hydrogen peroxide reacts with o-tolidine chromogen in the presence of peroxidase. The extent to which the chromogen is oxidized determines the color which is produced, ranging from yellow to green. Low amounts of glucose are normally excreted in urine.<sup>3</sup> Glucose concentrations more than 50 mg/dL, read at either 20 or 45 seconds, may be considered abnormal if results are consistent. At 20 seconds, results should be interpreted qualitatively. For semi-quantitative results, read at 45 seconds only.

**Ketone:** This test is based on ketones reacting with nitroprusside and acetoacetic acid to produce a color change ranging from light pink for negative results to a darker pink or purple color for positive results. Ketones are normally not present in urine. Detectable ketone levels may occur in urine during physiological stress conditions such as fasting, pregnancy and frequent strenuous exercise.<sup>4-6</sup> In starvation diets, or in other abnormal carbohydrate metabolism situations, ketones appear in the urine in excessively high

concentration before serum ketones are elevated.<sup>7</sup>

**Bilirubin:** This test is based on azo-coupling reaction of bilirubin with diazotized dichloroaniline in a strongly acidic medium. Varying bilirubin levels will produce a pinkish-tan color proportional to its concentration in urine. In normal urine, no bilirubin is detectable by even the most sensitive methods. Even trace amounts of bilirubin require further investigation. Atypical results (colors different from the negative or positive color blocks shown on the color chart) may indicate that bilirubin-derived bile pigments are present in the urine specimen, and are possibly masking the bilirubin reaction.

**Blood:** This test is based on the peroxidase-like activity of hemoglobin which catalyzes the reaction of cumene-hydroperoxide and 3,3',5,5'-tetramethylbenzidine. The resulting color ranges from orange to green to dark blue. Any green spots or green color development on the reagent area within 60 seconds is significant and the urine specimen should be examined further. Blood is often, but not invariably, found in the urine of menstruating females.

**Specific Gravity:** This test is based on the apparent pKa change of certain pretreated polyelectrolytes in relation to ionic concentration. In the presence of an indicator, colors range from deep blue-green in urine of low ionic concentration to green and yellow-green in urine of increasing ionic concentration. Randomly collected urine may vary in specific gravity from 1.003-1.040. Twenty-four hour urine from healthy adults with normal diets and fluid intake will have a specific gravity of 1.016-1.022.<sup>8</sup> In cases of severe renal damage, the specific gravity is fixed at 1.010, the value of the glomerular filtrate.

**Protein:** This reaction is based on the phenomenon known as the "protein error" of pH indicators where an indicator that is highly buffered will change color in the presence of proteins (anions) as the indicator releases hydrogen ions to the protein. At a constant pH, the development of any green color is due to the presence of protein. Colors range from yellow to yellow-green for negative results and green to green-blue for positive results. 1-14 mg/dL of protein may be excreted by a normal kidney.<sup>9</sup> A color matching any block greater than trace indicates significant proteinuria. For urine with high specific gravity, the test area may most closely match the trace color block even though only normal concentrations of protein are present. Clinical judgment is required to evaluate the significance of trace results.

**Urobilinogen:** This test is based on a modified Ehrlich reaction between p-diethylaminobenzaldehyde and urobilinogen acid in strongly acidic medium to produce a pink color. Urobilinogen is one of the major compounds produced in heme synthesis and is a normal substance in urine. The expected range for normal urine with this test is 0.2-1.0 mg/dL (3.5-17 µmol/L). A result of 2.0 mg/dL (35 µmol/L) may be of clinical significance, and the patient specimen should be further evaluated.

**Nitrite:** This test depends upon the conversion of nitrate to nitrite by the action of Gram negative bacteria in the urine. In an acidic medium, nitrite in the urine reacts with p-arsanilic

acid to form a diazonium compound. The diazonium compound in turn couples with 1 N-(1-naphthyl)- ethylenediamine to produce a pink color. Nitrite is not detectable in normal urine.<sup>3</sup> The nitrite area will be positive in some cases of infection, depending on how long the urine specimens were retained in the bladder prior to collection. Retrieval of positive cases with the nitrite test ranges from as low as 40% in cases where little bladder incubation occurred, to as high as approximately 80% in cases where bladder incubation took place for at least 4 hours.

**pH:** This test is based on a double indicator system which gives a broad range of colors covering the entire urinary pH range. Colors range from orange to yellow and green to blue. The expected range for normal urine specimens from newborns is pH 5-7. The expected range for other normal urine specimens is pH 4.5-8, with an average result of pH 6.

### REAGENTS AND PERFORMANCE CHARACTERISTICS

Based on the dry weight at the time of impregnation, the concentrations given may vary within manufacturing tolerances. The following table below indicates read times and performance characteristics for each parameter.

Reagent	Read Time	Composition	Description
<b>Ascorbic Acid (ASC)</b>	30 seconds	0.3% w/w 2,6-dichlorophenolindophenol; 99.7% w/w buffer and non-reactive ingredients	Detects ascorbic acid as low as 5-10 mg/dL (0.28-0.56 mmol/L).
<b>Glucose (GLU)</b>	45 seconds	1.5% w/w glucose oxidase; 0.5% w/w peroxidase; 2.0% w/w o-tolidine; 75.0% w/w buffer; 21.0% w/w non-reactive ingredients	Detects glucose as low as 25-50 mg/dL (1.4-2.8 mmol/L). Results may be read at 20 seconds for qualitative results or at 45 seconds for semi-quantitative results.
<b>Ketone (KET)</b>	40 seconds	5% w/w sodium nitroprusside; 95% w/w buffer	Detects acetoacetic acid as low as 2.5-5 mg/dL (0.25-0.5 mmol/L).
<b>Bilirubin (BIL)</b>	30 seconds	0.5 % w/w 2,4-dichloroaniline diazonium salt; 99.5% w/w buffer and non-reactive ingredients	Detects bilirubin as low as 0.4-0.8 mg/dL (6.8-13.6 µmol/L).
<b>Blood (BLO)</b>	60 seconds	4% w/w 3,3',5,5'-tetramethylbenzidine (TMB); 6% w/w	Detects free hemoglobin as low as 0.015-0.062 mg/dL or

		cumene hydroperoxide; 90% w/w buffer and non-reactive ingredients	5-10 Ery/ $\mu$ L in urine specimens with ascorbic acid content of <50 mg/dL.
<b>Specific Gravity (SG)</b>	45 seconds	2.5% w/w bromthymol blue indicator; 17.5% w/w buffer and non-reactive ingredients; 55% poly (methyl vinyl ether/maleic anhydride); 25% sodium hydroxide	Determines urine specific gravity between 1.000 and 1.030. Results correlate with values obtained by refractive index method within $\pm$ 0.005.
<b>Protein (PRO)</b>	60 seconds	0.3% w/w tetrabromophenol blue; 99.7% w/w buffer and non-reactive ingredients	Detects albumin as low as 7.5-20 mg/dL (0.075-0.2 g/L).
<b>Urobilinogen (URO)</b>	60 seconds	2.5% w/w p-diethylaminobenzaldehyde; 97.5% w/w buffer and non-reactive ingredients	Detects urobilinogen as low as 0.2-1.0 mg/dL (3.5-17 $\mu$ mol/L).
<b>Nitrite (NIT)</b>	60 seconds	4.5% w/w p-arsanilic acid; 95.5% w/w non-reactive ingredients	Detects sodium nitrite as low as 0.05-0.1 mg/dL in urine with a low specific gravity and less than 30 mg/dL ascorbic acid.
<b>pH</b>	60 seconds	0.5% w/w methyl red sodium salt; 5% w/w bromthymol blue; 94.5% w/w non-reactive ingredients	Permits the quantitative differentiation of pH values within the range of 5-9.

The performance characteristics of the Urinalysis Reagent Strips (Urine) have been determined in both laboratory and clinical tests. Parameters of importance to the user are sensitivity, specificity, accuracy and precision. Generally, this test has been developed to be specific for the parameters to be measured with the exceptions of the interferences listed. Please refer to the Limitations section in this package insert. Interpretation of visual results is dependent on several factors: the variability of color perception, the presence or absence of inhibitory factors, and the lighting conditions when the strip is

read. Each color block on the chart corresponds to a range of analyte concentrations.

#### PRECAUTIONS

- For *in vitro* diagnostic use only. Do not use after the expiration date.
- The strip should remain in the closed canister until use.
- Do not touch the reagent areas of the strip.
- Discard any discolored strips that may have deteriorated.
- All specimens should be considered potentially hazardous and handled in the same manner as an infectious agent.
- The used strip should be discarded according to local regulations after testing.

#### STORAGE AND STABILITY

Store as packaged in the closed canister either at room temperature or refrigerated (2-30°C). Keep out of direct sunlight. The strip is stable through the expiration date printed on the canister label. Do not remove the desiccant. Remove only enough strips for immediate use. Replace cap immediately and tightly. **DO NOT FREEZE.** Do not use beyond the expiration date.

Note: Once the canister has been opened, the remaining strips are stable for up to 3 months. Stability may be reduced in high humidity conditions.

#### SPECIMEN COLLECTION AND PREPARATION

A urine specimen must be collected in a clean and dry container and tested as soon as possible. Do not centrifuge. The use of urine preservatives is not recommended. If testing cannot be done within an hour after voiding, refrigerate the specimen immediately and let it return to room temperature before testing.

Prolonged storage of unpreserved urine at room temperature may result in microbial proliferation with resultant changes in pH. A shift to alkaline pH may cause false positive results with the protein test area. Urine containing glucose may decrease in pH as organisms metabolize the glucose.

Contamination of the urine specimen with skin cleansers containing chlorhexidine may affect protein (and to a lesser extent, specific gravity and bilirubin) test results.

#### MATERIALS

##### Materials Provided

- Strips
- Package insert
- Specimen collection container
- Timer

##### Materials Required But Not Provided

#### DIRECTIONS FOR USE

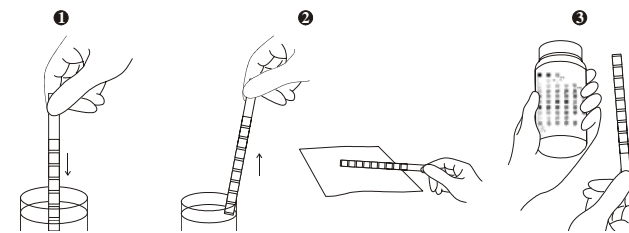
**Allow the strip, urine specimen, and/or controls to reach room temperature (15-30°C) prior to testing.**

1. Remove the strip from the closed canister and use it as soon as possible. Immediately close the canister tightly after removing the required number of strip(s). Completely immerse the reagent areas of the strip in fresh, well-mixed urine and immediately remove the strip to avoid dissolving the reagents. See illustration 1 below.
2. While removing the strip from the urine, run the edge of the strip against the rim of the urine container to remove excess

urine. Hold the strip in a horizontal position and bring the edge of the strip into contact with an absorbent material (e.g. a paper towel) to avoid mixing chemicals from adjacent reagent areas and/or soiling hands with urine. See illustration 2 below.

3. Compare the reagent areas to the corresponding color blocks on the canister label at the specified times. Hold the strip close to the color blocks and match carefully. See illustration 3 below.

Note: Results may be read up to 2 minutes after the specified times.



#### INTERPRETATION OF RESULTS

Results are obtained by direct comparison of the color blocks printed on the canister label. The color blocks represent nominal values; actual values will vary close to the nominal values. In the event of unexpected or questionable results, the following steps are recommended; confirm that the specimens have been tested within the expiration date printed on the canister label, compare results with known positive and negative controls and repeat the test using a new strip. If the problem persists, discontinue using the strip immediately and contact your local distributor.

#### QUALITY CONTROL

For best results, performance of reagent strips should be confirmed by testing known positive and negative specimens/controls whenever a new test is performed, or whenever a new canister is first opened. Each laboratory should establish its own goals for adequate standards of performance.

#### LIMITATIONS

**Note:** As with all diagnostic and therapeutic tests, all results must be considered with other clinical information available to the physician.

**Ascorbic acid:** No interference is known.

**Glucose:** This test is highly specific for glucose. No substance excreted in urine other than glucose is known to give a positive result. The reagent area does not react with ketones, lactose, galactose, fructose or other metabolic substances, nor with reducing metabolites of drugs (e.g. salicylates and nalidixic acid). Sensitivity may be decreased in specimens with high specific gravity (>1.025) and with ascorbic acid concentrations of  $\geq$  10 mg/dL.

**Ketone:** The test does not react with acetone or  $\beta$ -hydroxybutyrate. Urine specimens of high pigment, and

other substances containing sulfhydryl groups occasionally give reactions up to and including trace (+).

**Bilirubin:** Bilirubin is absent in normal urine, so any positive result, including a trace positive, indicates an underlying pathological condition and requires further investigation. Reactions may occur with urine containing large doses of chlorpromazine or rifampen that might be mistaken for positive bilirubin.<sup>10</sup> The presence of bilirubin-derived bile pigments may mask the bilirubin reaction. This phenomenon is characterized by color development on the test patch that does not correlate with the colors on the color chart. Large concentrations of ascorbic acid may decrease sensitivity.

**Blood:** A uniform blue color indicates the presence of myoglobin, hemoglobin or hemolyzed erythrocytes. Scattered or compacted blue spots indicate intact erythrocytes. To enhance accuracy, separate color scales are provided for hemoglobin and for erythrocytes. Positive results with this test are often seen with urine from menstruating females. It has been reported that urine of high pH reduces sensitivity, while moderate to high concentration of ascorbic acid may inhibit color formation. Microbial peroxidase, associated with urinary tract infection, may cause a false positive reaction. The test is slightly more sensitive to free hemoglobin and myoglobin than to intact erythrocytes.

**Specific Gravity:** Ketoacidosis or protein higher more than 100 mg/dL may cause elevated results. Results are not affected by non-ionic urine components such as glucose. If the urine has a pH of 7 or greater, add 0.005 to the specific gravity reading indicated on the color chart.

**Protein:** Any green color indicates the presence of protein in the urine. This test is highly sensitive for albumin, and less sensitive to hemoglobin, globulin and mucoprotein. A negative result does not rule out the presence of these other proteins. False positive results may be obtained with highly buffered or alkaline urine. Contamination of urine specimens with quaternary ammonium compounds or skin cleansers containing chlorhexidine produce false positive results. The urine specimens with high specific gravity may give false negative results.

**Urobilinogen:** All results lower than 1 mg/dL urobilinogen should be interpreted as normal. A negative result does not at any time preclude the absence of urobilinogen. The reagent area may react with interfering substances known to react with Ehrlich's reagent, such as p-aminosalicylic acid and sulfonamides.<sup>10</sup> False negative results may be obtained if formalin is present. The test cannot be used to detect porphobilinogen.

**Nitrite:** The test is specific for nitrite and will not react with any other substance normally excreted in urine. Any degree of uniform pink to red color should be interpreted as a positive result, suggesting the presence of nitrite. Color intensity is not proportional to the number of bacteria present in the urine specimen. Pink spots or pink edges should not be interpreted as a positive result. Comparing the reacted reagent area on a white background may aid in the detection of low nitrite levels,

which might otherwise be missed. Ascorbic acid above 30 mg/dL may cause false negatives in urine containing less than 0.05 mg/dL nitrite ions. The sensitivity of this test is reduced for urine specimens with highly buffered alkaline urine. For accurate results, antibiotics should be discontinued for at least 3 days before the test is performed. A negative result does not at any time preclude the possibility of bacteruria. Negative results may occur in urinary tract infections from organisms that do not contain reductase to convert nitrate to nitrite; when urine has not been retained in the bladder for a sufficient length of time (at least 4 hours) for reduction of nitrate to nitrite to occur; or when dietary nitrate is absent.

**Calibration (CAL):** The calibration area is free of any chemicals and is solely used as a reference for internal evaluation.

**pH:** pH readings are not affected by variations in urinary buffer concentration.

#### BIBLIOGRAPHY

1. Free AH, Free HM. *Urinalysis, Critical Discipline of Clinical Science*. CRC Crit. Rev. Clin. Lab. Sci. 3(4): 481-531, 1972.
2. Yoder J, Adams EC, Free, AH. *Simultaneous Screening for Urinary Occult Blood, Protein, Glucose, and pH*. Amer. J. Med Tech. 31:285, 1965.
3. Shchersten B, Fritz H. *Subnormal Levels of Glucose in Urine*. JAMA 201:129-132, 1967.
4. McGarry JD, Lilly. Lecture, 1978: New Perspectives in the Regulation of Ketogenesis. *Diabetes* 28: 517-523 May, 1978.
5. Williamson DH. *Physiological Ketoses, or Why Ketone Bodies?* Postgrad. Med. J. (June Suppl.): 372-375, 1971.
6. Paterson P, et al. *Maternal and Fetal Ketone Concentrations in Plasma and Urine*. *Lancet*: 862-865; April 22, 1967.
7. Fraser J, et al. *Studies with a Simplified Nitroprusside Test for Ketone Bodies in Urine, Serum, Plasma and Milk*. *Clin. Chem. Acta* II: 372-378, 1965.
8. Henry JB, et al. *Clinical Diagnosis and Management by Laboratory Methods*, 18<sup>th</sup> Ed. Philadelphia. Saunders. 396-397, 415, 1991.
9. Burtis CA, Ashwood ER. *Tietz Textbook of Clinical Chemistry* 2<sup>nd</sup> Ed. 2205, 1994.
10. Tietz NW. *Clinical Guide to Laboratory Tests*. W.B. Saunders Company. 1976.

#### ATLAS Medical

**William James House,  
Cowley Road, Cambridge, CB4 4WX, UK**

**Tel: ++44 (0) 1223 858 910**

**Fax: ++44 (0) 1223 858 524**

**PPI474A01**

**Revision A (12.08.2007)**